

# push-pull switches



F

ONE CIRCUIT	F1
TWO CIRCUIT	F2
MARINE CONSTRUCTION	F3
SPECIAL APPLICATIONS	F4

## push-pull switches

### F1 ONE CIRCUIT

*SPST, Off-On. Universal application. Mounting hardware included.*

#### Normally Off, 10A Heavy duty, 10A at 12V DC, 6-36V.

##### 5007 screw terminals BP ★

Aluminum mounting stem  
3/8"-32 thread, 5/8" (15.9mm)  
long. Tan plastic knob with  
10-32 threaded metal insert.  
Two screw terminals, plated steel case.



##### 50031\* blade terminals

Same as 5007, except with two blade terminals and ivory plastic knob.

##### 5011 screw terminals BP ★

Steel mounting stem  
1/2"-20 thread, 5/8" (15.9mm)  
long. Chrome-plated knob.  
Two screw terminals, plated  
steel case.

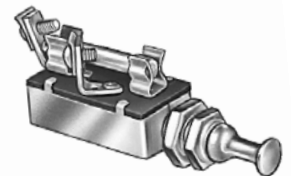


##### 50070 silver contacts, blade terminals

Same as 5011, except with two blade terminals.

##### 5053 glass fuse, chrome knob

Steel mounting stem 1/2"-20  
thread, 5/8" (15.9mm) long.  
Chrome-plated knob. Two  
screw terminals, plated steel  
case. 20A SFE fuse.

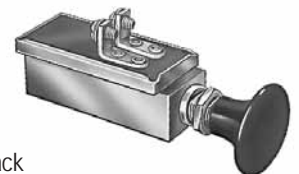


##### 5067 glass fuse, plastic knob

Same as 5053, except with ivory plastic knob.

##### 50077 sealed case

O-ring in stem, and gasket-  
sealed terminal insulator.  
Brass mounting stem 7/16"-28  
thread, 5/16" (7.9mm) long. Black  
plastic knob with 10-32 threaded metal insert.  
Two screw terminals, zinc case.



CONTINUED **F1**

★ Rapid ship item. BP Available in retail clamshell pack. ★ Minimum order quantity may apply.

**F3 MARINE CONSTRUCTION**

10A at 12V DC, 6-36V DC. Brass mounting hardware included.

## One Circuit

Brass housing, brass mounting stem 3/8" -32 thread, 1 1/4" (31.8mm) long. Fits panels up to 3/4" (19.1mm) thick.

### SPST Off-On, Normally Off

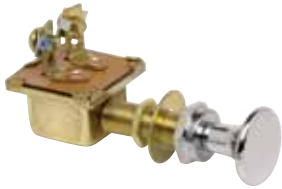
#### M-480 plastic knob BP

Two brass screw terminals. Ivory plastic knob, 10-32 thread.



#### M-482 sealed, screw terminals BP ★

Two brass screw terminals. Chrome-plated brass knob. Gasket-sealed case.



#### M-482-01 sealed, blade terminals BP

Two brass blade terminals. Chrome-plated brass knob. Gasket-sealed case.



#### M-482-02 sealed, plastic knob

Two brass screw terminals. Black plastic knob, 10-32 thread, and set screw. Gasket-sealed case.



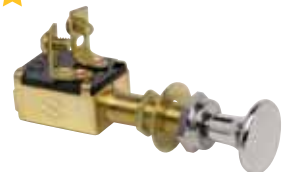
#### M-606 PVC-coated BP ★

Brass housing, plasticized. Two insulated copper wire leads, 12" (304.8mm) long. Chrome-plated brass knob, 10-32 thread.



#### M-628 chromed knob BP ★

Two brass screw terminals. Chrome-plated brass knob, 10-32 thread.



## SPST Off-On, Normally On

#### M-530

Gasket-sealed brass housing. Two brass screw terminals. Chrome-plated brass knob. Brass mounting stem, 3/8" -32 thread, 1 1/4" (31.8mm) long.



## Two Circuits

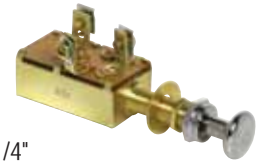
#### M-527 SPST Off-On BP

Normally Off. Brass housing. Three brass screw terminals. Chrome-plated brass knob 10-32 thread. Brass mounting stem, 3/8" -32 thread, 1 1/4" (31.8mm) long, fits panels up to 1" (25.4mm) thick. With brass facenut, washer and hexnut.



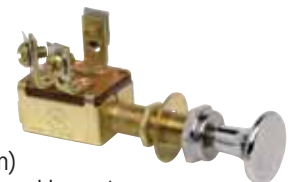
#### M-531 SPST Off-On-On BP

Off - On A&B - On B&H. Brass housing. Three brass screw terminals. Chrome-plated brass knob 10-32 thread. Brass mounting stem, 3/8" -32 thread, 1 1/4" (31.8mm) long, fits panels up to 1" (25.4mm) thick. With brass facenut, washer and hexnut.



#### M-630 SPDT On-On BP

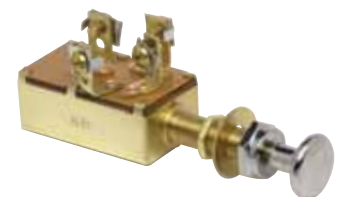
Brass housing. Three screw terminals. Chrome-plated brass knob. Brass mounting stem, 3/8" -32 thread, 1 1/4" (31.8mm) long, fits panels up to 1" (25.4mm) thick. With brass facenut, washer and hexnut.



## Three Circuits

#### M-532 SPDT BP

Off - On 1&2 - On 1&3. Brass housing. Four brass screw terminals. Chrome-plated brass knob 10-32 thread. Brass mounting stem, 3/8" -32 thread, 1 1/4" (31.8mm) long, fits panels up to 1" (25.4mm) thick. With brass facenut, washer and hexnut.



SPECIAL F4

★ Rapid ship item. BP Available in retail clamshell pack. ★ Minimum order quantity may apply.